



ENTRANCES FRAMES



ANODIC OXIDATION PRE-ANODIZED AND PRE-PAINTED

OXIDATION
INORGANIC

for profiles in aluminium



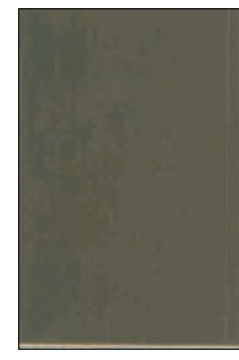
ARS 1



ARS 2



ARS 3



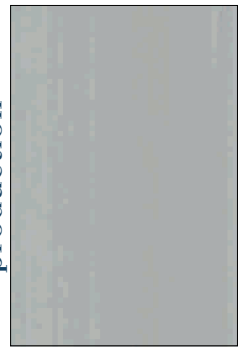
ARS 4



ARS 5

STEEL
ANODISED

for panels an gutter
production



OX SILVER



STEEL
PREPAINTED

for panels an gutter
production



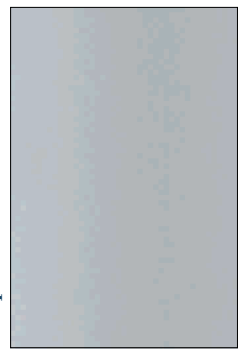
AC 43042



AC 43075

OXIDATION
ELECTROCOLOUR

for profiles in aluminium



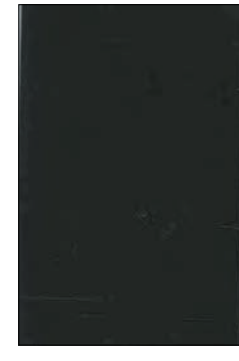
ARC 1



ARS 2001



ARS 2003



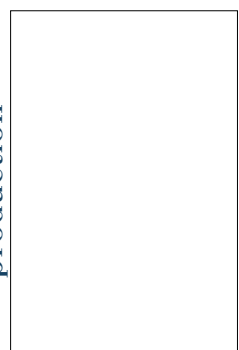
ARS 2005



ARS 2009

STEEL
PREPAINTED

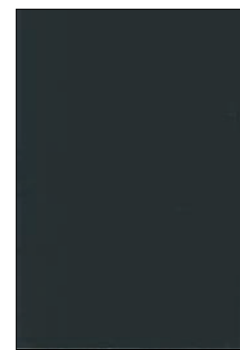
for panels an gutter
production



AC 43055



AC 43070



AC 83002

SPECIAL ANODIC OXIDATION POLISHED ALUMINIUM

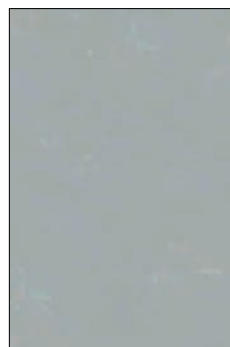
OXIDATION
INORGANIC
*not suitable for
marine environment



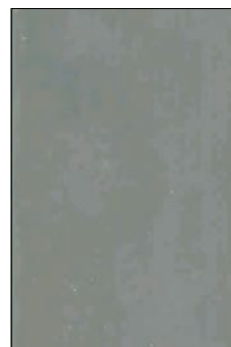
SILVER
POLISHED*



GOLD
POLISHED*



BR 6 INOX
POLISHED*



SIMIL STEEL



TECHNICAL CHARACTERISTICS

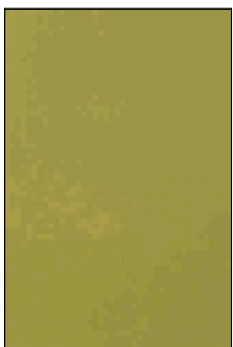
The anodic oxidation treatments are carried out according to the UNI 4522-3952 rules, and EWM rules. Staining with inorganic salts, with fixing in chemical bath abbreviations ARS 1- 2- 3- 4- 5. Staining with metal salts with fixing in electrolytic bath abbreviations ARS 2001- 2003 -2005 - 2007 -2009.

- The color finish is regulated by the legislation which allows a tonality tolerance with a min-max. The slight differences that may be found with respect to the sample may be due to the composition tolerances of the support material, to the coating material, without however altering the characteristics of physical and mechanical resistance.
- The slight deformity of the aesthetic aspect between the extruded profiles and the relative pre-painted sheets can be caused by the different type of process used and the type of support.
- Protect artifacts from aggressive agents, particularly on building sites, from acids, oils, cement, lime and soda.
- Maintenance of artifacts exposed to the outside: we recommend periodic cleaning of the artifacts at least twice a year and more frequently for areas with an aggressive atmosphere (industrial area, marina).
- We recommend using water with neutral detergent, or specific products for treatments (VECTAL sheet).

SPECIAL MATERIALS METALS AND FINISHING TOUCHES

MATERIAL
COATINGS

for panels and sheet metal



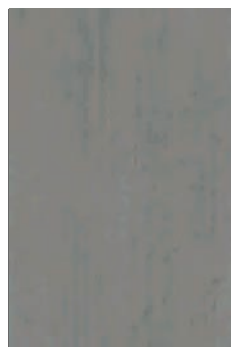
GLOSS BRASS



INOX MIRROR



INOX BRUSHED



SCOTCH BRITE



CORTEN