

VITRUM

ALL - GLASS
REVOLVING DOORS



VITRUM

AUTOMATIC AND
MANUAL ALL-GLASS
REVOLVING DOORS

VITRUM & VITRUM FRAME

REVOLVING DOORS WITH ABSOLUTE TRANSPARENCY



Ponzi Vitrum - Entrance with glazed canopy illuminated with LED



Ponzi Vitrum Frame - New headquarters of the University Campus Rome



Ponzi Vitrum Frame - Rimini Fair entrance, revolving doors with glazed ceiling

Ponzi Automatic Entrance is the first Italian company to offer an innovative revolving door with a glass roof. The door has fixed curved walls and a glass top hat. Vitrum fits perfectly with the latest architectural trends, in which glass plays a prominent role and where it appears to be a timeless material. Thanks to its essentiality it fits both in contemporary and design contexts, and in classic architectural contexts. It meets all current safety and quality requirements and is available in both manual and automatic operation. The automatic versions require detection sensors with relative fixing by means of external upper guides, the motorization is hidden; recessed into the floor in a special stainless steel box measuring 630 x 630 x 250 mm in the Vitrum Frame version, while in the all-glass version the box changes according to the diameter of the door. The Vitrum revolving doors are entirely made of tempered and laminated glass, whose fixing points are anchored to the base of the fixed curved walls, and are built according to the EN 3569 regulatory standards, relating to building glass. The door profiles, in the standard version, are in aluminum and can be covered in brushed stainless steel or mirror polished stainless steel. The profiles contain the special antistatic and dustproof brushes in natural horsehair. In the manual versions, vertical handles can be applied, made with a 30 mm diameter tubular stainless steel profile. On the floor it is possible to place different types of Ponzi technical doormats, in different colors and finishes; Recommended is the Ponzi Tire, made with striped elements in rubber compounds (recycled from aircraft tires) and aluminum elements, joined by steel profiles.

VITRUM & VITRUM FRAME

DETAILS AND TECHNICAL OPTIONS



Ponzi Vitrum - innovation, all-glass revolving door

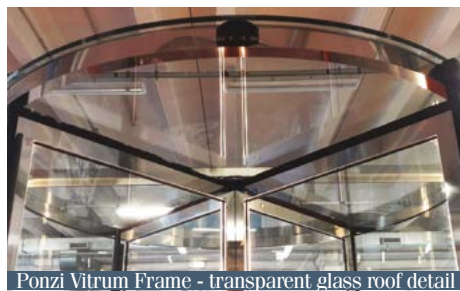


Ponzi Vitrum Frame - solution with transparent curved walls



Ponzi Vitrum Frame - glass roof

For the Ponzi Vitrum and Vitrum Frame revolving door, various possibilities of realization are available such as: horizontal or vertical tubular handles in satin stainless steel for the manual versions; night closing, "Night Sliding Door" system, consisting of two curved glass doors, equipped with lock and cylinder, which slide only manually on a special tubular guide, in stainless steel, (during opening they are superimposed on the fixed curved doors, while in the closing times are placed in a central position, giving the door a cylindrical appearance). An additional electromagnetic locking system for rotation is also available, using a device with control that can be positioned remotely (for example in the reception). The door is made in the standard version with a special lock complete with eurocylinder. The glasses can be of different colors: standard transparent, extra-clear or with special colors such as green and gray. A built-in Ponzi technical doormat is usually supplied to cover the motor box, walled up to the floor, with a thickness ranging from 15 to 25 mm, in various colors (mainly in black rubber or with special anthracite gray compounds). To facilitate the insertion of the doormat into the floor, a special stainless steel ring is provided to be pre-fixed.



Ponzi Vitrum Frame - transparent glass roof detail



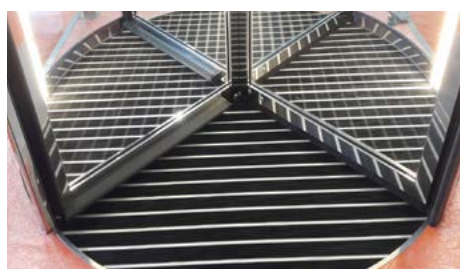
Ponzi Vitrum - all-glass central column axis detail



Vitrum Frame - Sill safety in the base



Safety sensor and vertical sensitive edges



Vitrum e Vitrum Frame - built in motor with Ponzi Scrub technical mat covering the floor motor



TECHNICAL DETAILS

DESCRIPTIVE OF SPECIFICATIONS

PONZI VITRUM AUTOMATIC GLASS REVOLVING DOOR, made with THREE or FOUR WINGS, consisting of:

- Semi-circular side walls made of aluminum frame and clear transparent tempered laminated glass 4.4.2 fixed to the floor;

Upper section divided into two semicircles made of clear transparent laminated glass plates, 18 mm thick;

- Rotating doors made with aluminum frame and laminated glass 4.4.2;

- 45 mm brushes and seals, made of horsehair, placed on three sides, according to European safety regulations, for perfect airtightness in any position of the doors;

- Mechanical lock (manual) with safety cylinder (optional);

AUTOMATION positioned in the floor, inside a containment structure to be fixed to your care on our indications, electromechanically operated for the automatic rotation of the leaves complete with:

- 24 Vdc - 300 W direct current motor;

- Management panel with PWM control, placed near the door;

- N ° 2 motion sensors for opening impulse;

- N ° 1 Function and control selector located on the internal upright.

- N ° 1 Emergency stop button positioned on the internal side.

- N ° 2 presence sensors for slowing down near the uprights;

- Sensitive rubber edges located at each end of the fixed curved walls. The activation of one of them stops the door movement.



SAFETY

The Ponzi Vitrum automatic door is complete with safety devices as required by the strictest European regulations, such as: vertical sensitive edges, active infrared sensors, emergency stop button. It also features a door repositioning system and controlled speed to make it even safer.

ELECTRIC LOCK

A further safety device (optional) is the electromagnetic locking system. It is created using an electromechanical system and is activated by an external command, allowing instant blocking of the rotation of the doors. This locking system can be combined with badge readers.

Internal diameter (mm)	Door Height (mm)	Passage (mm)		Diameter max. encumbrance (mm)	Passage capacity of people per minute		People by sector	
		3 wings	4 wings		3 wings	4 wings	3 wings	4 wings
1600	2100/3400	720	1068	1650	2 x 22	2 x 26	1	1
1800	2100/3400	820	1210	1850	2 x 22	2 x 26	1	1
2000	2100/3400	920	1351	2050	2 x 22	2 x 26	1	1
2200	2100/3400	1020	1493	2250	2 x 20	2 x 26	1	1
2400	2100/3200	1120	1634	2450	2 x 18	2 x 24	1	1
2600	2100/3200	1220	1776	2650	2 x 33	2 x 22	2	1
2800	2100/3000	1320	1917	2850	2 x 31	2 x 20	2	1
3000	2100/3000	1420	2059	3050	2 x 29	2 x 38	2	2

Ponzi Vitrum is available in the diameters indicated in the table with 3 and 4 doors. The heights are available according to the diameters, up to a maximum of mm. 3400 (with a diameter of 2200 mm). The capacity and passage of people indicated is to be considered in both directions of travel in normal conditions of use.



PONZI Automatic Doors
26/a, Viale Gramsci
48031 · Bagnara · RA · Italy
☎ +39 0545 76009

PONZI Italian Branches
7, V. Calvino · RHO (Milan)
1378, V. Salaria · ROME
6, V. Moro · Montesilvano · PE

PONZI